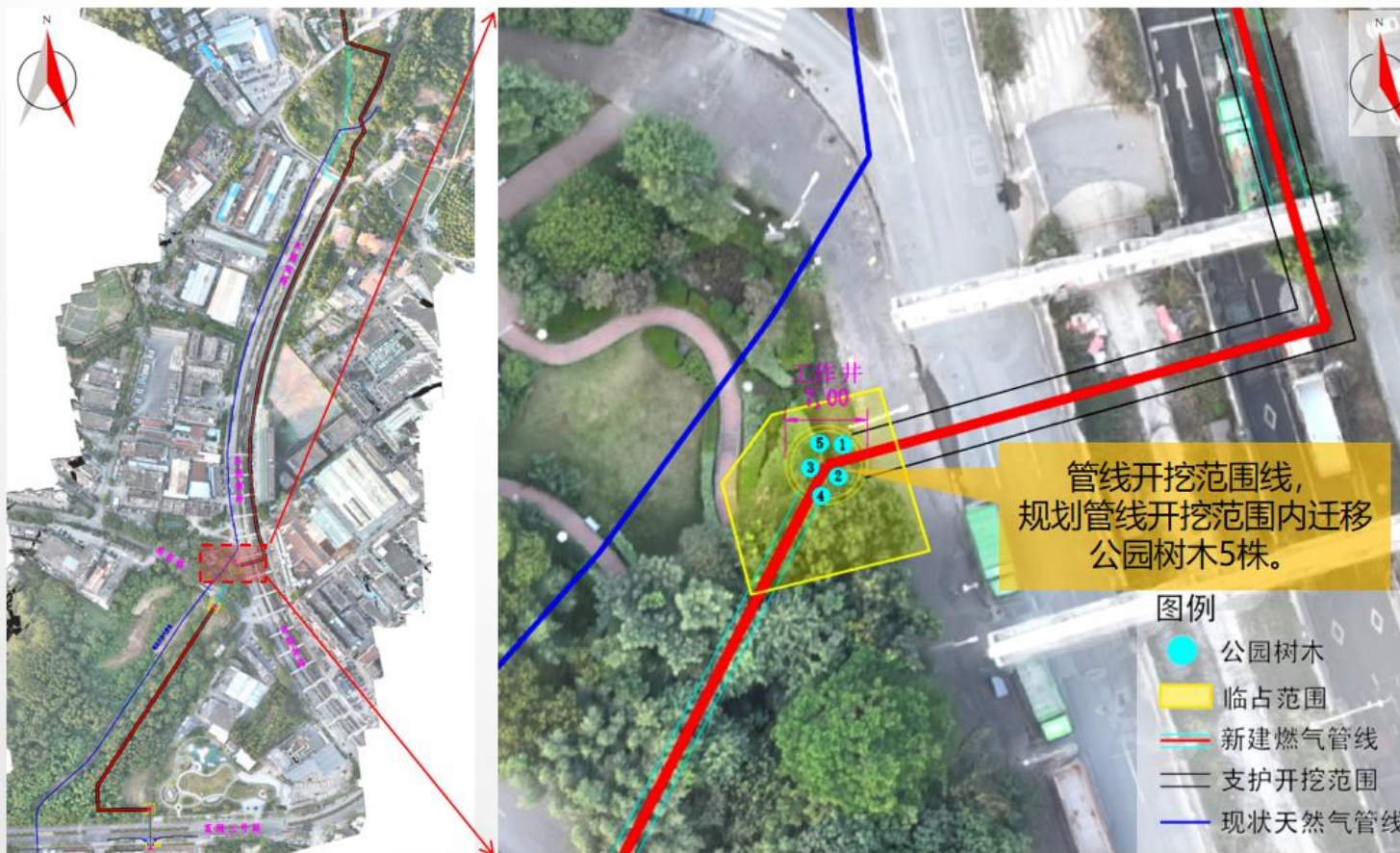


龙华区大外环西段（求雨岭门站~深莞分界处）天然气高压管线工程



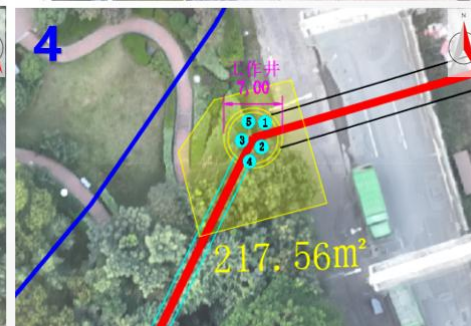
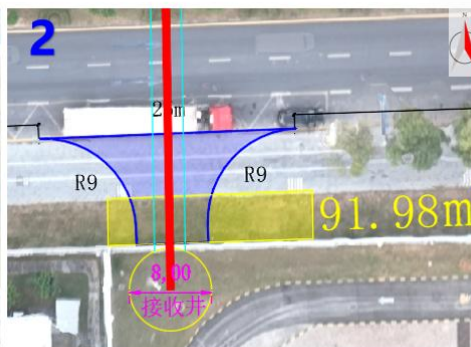
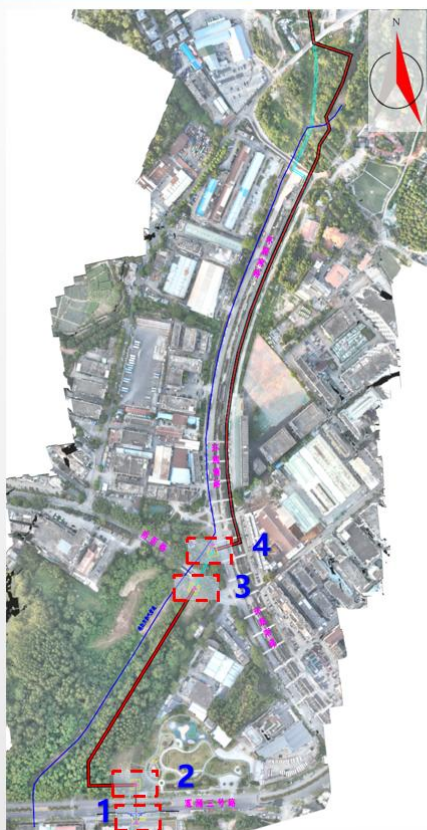
4-项目位置示意图



龙华区大外环西段（求雨岭门站~深莞分界处）天然气高压管线工程



7-临时占用绿地
759.54m²现场照片



图例

- 临占范围
- 支护开挖范围
- 新建燃气管线
- 现状天然气管线